

Rotator Cuff Repair Using Reinforcement

Reinforcement with BioTend contributes to treatment and prevention of rotator cuff tears. It can enhance quality of the outcome, reduce risk of repair failure, and allow for effective rehabilitation protocols, timely return to function, and high patient satisfaction.

For Rotator Cuff Repair Reinforcement:

- Implantation can be done by open, mini-open, or arthroscopic surgery.
- Complete repair of RC.
- Lay BioTend over repair site.
- Suture medially to the tendon and laterally to the bone via anchors or trans-osseous sutures.

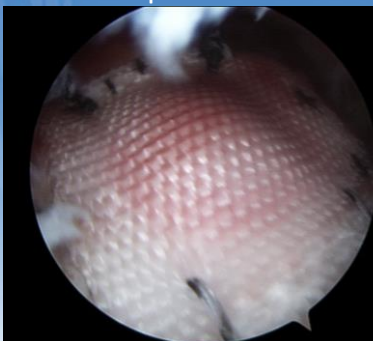
Appropriate sizes of BioTend include, but are not limited to:

25 x 25 mm, 25 x 30 mm, 25 x 35 mm, 25 mm x 43 mm, 40 x 43 mm, 40 x 30 mm, 40 x 25 mm.

Typical applications for RC repair reinforcement involve, but are not limited to:

- Large and massive tears
- Re-tears
- Patients over 60 years of age
- Patients who smoke
- Patients who are diabetic
- Adjunct to total shoulder replacement with instability
- Postponing reverse shoulder replacement

Arthroscopic



Open Surgery

